

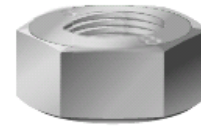
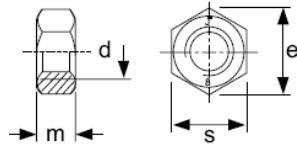
HDG/ZP Hex Nut 熱浸/鍍鋅絲母

Class 8

DIN 934

03133 HDG

03131 ZP



Order example: Class 8 ZP Hex Nut M16 (Order Code: 03131.160.000)

Material Standard:	BS 3692:2001
Specification:	BS 3692:2001 / DIN 934
Material:	Hot dip galvanized to ISO 1461:1999 / Zinc plated to ISO 4042:1999

d (diameter)	Thread Pitch	s (max.)	s (min.)	e (max.)	e (min.)	m (max.)	m (min.)	HDG	ZP	
M6	1	10.00	9.78	11.50	11.05	5.00	4.70	060000	060000	1000
M8	1.25	13.00	12.73	15.00	14.38	6.50	6.14	080000	080000	500
M10	1.5	17.00	16.73	19.60	18.90	8.00	7.64	100000	100000	200
M12	1.75	19.00	18.67	21.90	21.10	10.00	9.64	120000	120000	200
M16	2	24.00	23.67	27.70	26.75	13.00	12.57	160000	160000	100
M20	2.5	30.00	29.67	34.60	33.53	16.00	15.57	200000	200000	50
M24	3	36.00	35.38	41.60	39.98	19.00	18.48	240000	240000	50
M27	3	41.00	40.38	47.30	45.63	22.00	21.48	270000	270000	15
M30	3.5	46.00	45.38	53.10	51.28	24.00	23.48	300000	300000	15
M33	3.5	50.00				26.00		330000	330000	10
M36	4	55.00				29.00		360000		10
M39	4	60.00				38.00		390000		10
M42	4.5	65.00				34.00		420000		10
M45	4.5	70.00				36.00		450000		10

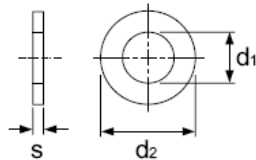
HDG/ZP Flat Washer 熱浸/鍍鋅平介子

ST

DIN 125A

03203 HDG

03201 ZP



Order example: DIN125A ZP WASHER M16 (Order Code: 03201.160.000)

Material Standard:	BS 1449 Part 2:1983
Specification:	DIN 125A / BS 4320:1968
Material:	Hot dip galvanized to ISO 1461:1999, Form A / Zinc plated to ISO 4042:1999, Form A

Form A	d1 (max.)	d1 (min.)	d2 (max.)	d2 min.	s (max.)	s (min.)	HDG	ZP	
M6	6.7	6.4	12.5	12.1	1.8	1.4	060000	060000	2000
M8	8.7	8.4	17	16.6	1.8	1.4	080000	080000	1000
M10	10.9	10.5	21	20.5	2.2	1.8	100000	100000	500
M12	13.4	13.0	24	23.5	2.7	2.3	120000	120000	500
M16	17.4	17.0	30	29.5	3.3	2.7	160000	160000	200
M20	21.5	21	37	36.2	3.3	2.7	200000	200000	200
M24	25.5	25	44	43.2	4.3	3.7	240000	240000	100
M27	28.5	28	50	49.2	4.3	3.7	270000	270000	100
M30	31.6	31	56	55.0	4.3	3.7	300000	300000	50
M33		34	60		5.0		330000		50
M36		37	66		5.0		360000		50
M39		40	72		6.0		390000		
M42		43	78		7.0		420000		
M45		46	85		7.0		450000		