

Steel

| | |
|-----------------------|-------------------------------------|
| Material Standard: | BS 1449 Part2:1983 |
| Specification: | BS 6946:1988 |
| Finishing (Item No.): | hot dip galvanized to ISO 1461:1999 |

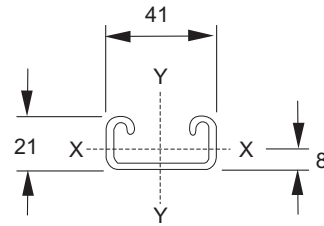
Plain Channel

DR21

Item No.

4005041213 (3 meters long)

4005041216 (6 meters long)



| Span or column unsupported Height in mm | Uniform Load at 175 N/mm ² Stress.kg | Deflection in mm at 175 N/mm ² | Uniform Load at Max. Deflec. Of 1/200th. Span. Kg | Uniform load at Max. Deflec. Of 1/360th. Span. Kg | Max. Load of column loaded @ Centroid kg | Max. Load of column loaded @ slot face kg |
|---|---|---|---|---|--|---|
| 500 | 276 | 1.81 | - | 212 | 3379 | 995 |
| 750 | 184 | 4.07 | 169 | 94 | 2198 | 859 |
| 1000 | 138 | 7.24 | 95 | 53 | 1353 | 690 |
| 1250 | 110 | 11.32 | 61 | 33 | 896 | 548 |
| 1500 | 92 | 16.30 | 42 | 23 | (634) | (437) |
| 2000 | 69 | 28.99 | 23 | - | - | - |

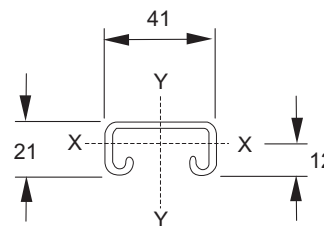
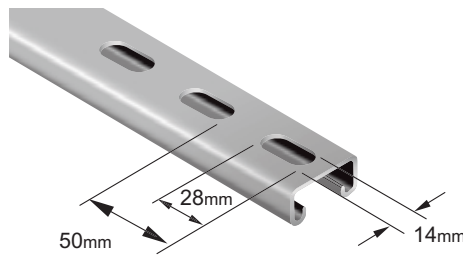
Slotted Channel

DR21S

Item No.

4003041213 (3 meters long)

4003041216 (6 meters long)



| Span or column unsupported Height in mm | Uniform Load at 175 N/mm ² Stress.kg | Deflection in mm at 175 N/mm ² | Uniform Load at Max. Deflec. Of 1/200th. Span. Kg | Uniform load at Max. Deflec. Of 1/360th. Span. Kg | Max. Load of column loaded @ Centroid kg | Max. Load of column loaded @ slot face kg |
|---|---|---|---|---|--|---|
| 500 | 254 | 2.01 | - | 174 | - | - |
| 750 | 169 | 4.54 | 139 | 77 | - | - |
| 1000 | 127 | 8.07 | 78 | 43 | - | - |
| 1250 | 101 | 12.61 | 50 | 27 | - | - |
| 1500 | 84 | 18.17 | 34 | - | - | - |
| 2000 | 63 | 32.30 | - | - | - | - |

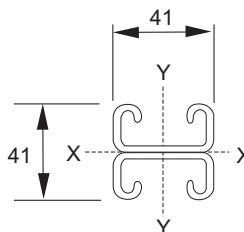
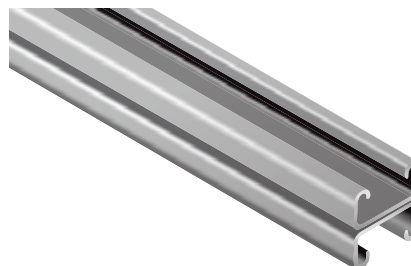
Combination Channel

DR21D

Item No.

4008041213 (3 meters long)

4008041216 (6 meters long)



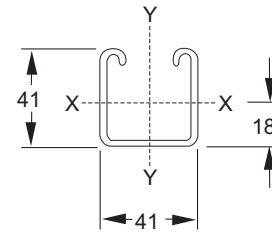
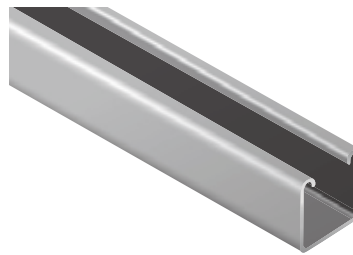
| Span or column unsupported Height in mm | Uniform Load at 175 N/mm ² Stress.kg | Deflection in mm at 175 N/mm ² | Uniform Load at Max. Deflec. Of 1/200th. Span. Kg | Uniform load at Max. Deflec. Of 1/360th. Span. Kg | Max. Load of column loaded @ Centroid kg | Max. Load of column loaded @ slot face kg |
|---|---|---|---|---|--|---|
| 500 | 779 | 1.07 | - | - | 7740 | 1809 |
| 1000 | 389 | 4.30 | - | 251 | 5367 | 1639 |
| 1500 | 259 | 9.68 | 201 | 111 | 2838 | 1289 |
| 2000 | 194 | 17.21 | 113 | 62 | (1668) | (977) |
| 2500 | 155 | 26.90 | 72 | 40 | (1090) | (745) |
| 3000 | 129 | 38.73 | 50 | 27 | - | - |

Grade 304 & 316 Stainless Steel and special length available on request



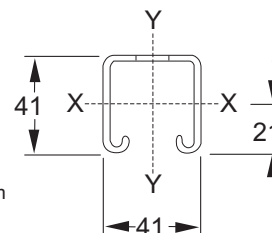
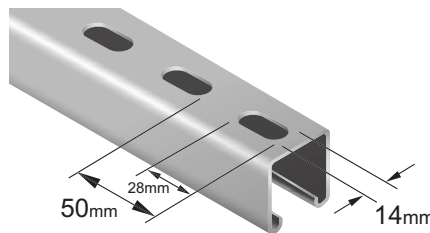
| | |
|-----------------------|-------------------------------------|
| Steel | |
| Material Standard: | BS 1449 Part2:1983 |
| Specification: | BS 6946:1988 |
| Finishing (Item No.): | hot dip galvanized to ISO 1461:1999 |

Plain Channel
 DR41
 Item No.
 4004041413 (3 meters long)
 4004041416 (6 meters long)



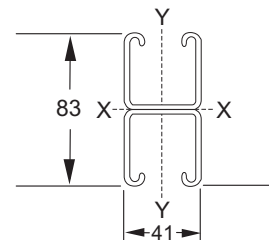
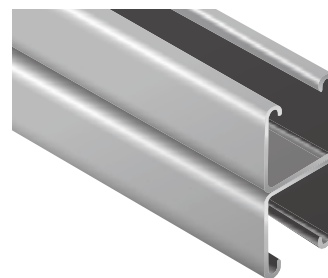
| Span or column unsupported Height in mm | Uniform Load at 175 N/mm ² Stress.kg | Deflection in mm at 175 N/mm ² | Uniform Load at Max. Deflec. Of 1/200th. Span. Kg | Uniform load at Max. Deflec. Of 1/360th. Span. Kg | Max. Load of column loaded @ Centroid kg | Max. Load of column loaded @ slot face kg |
|---|---|---|---|---|--|---|
| 500 | 884 | 0.95 | - | - | 5379 | 1650 |
| 1000 | 442 | 3.82 | - | 321 | 3373 | 1395 |
| 1500 | 294 | 8.60 | 257 | 142 | 2020 | 1093 |
| 2000 | 221 | 15.29 | 144 | 80 | 1395 | 879 |
| 2500 | 176 | 23.89 | 92 | 51 | 1044 | 725 |
| 3000 | 147 | 34.40 | 64 | 35 | (816) | (607) |

Slotted Channel
 DR41S
 Item No.
 4002041413 (3 meters long)
 4002041416 (6 meters long)



| Span or column unsupported Height in mm | Uniform Load at 175 N/mm ² Stress.kg | Deflection in mm at 175 N/mm ² | Uniform Load at Max. Deflec. Of 1/200th. Span. Kg | Uniform load at Max. Deflec. Of 1/360th. Span. Kg | Max. Load of column loaded @ Centroid kg | Max. Load of column loaded @ slot face kg |
|---|---|---|---|---|--|---|
| 500 | 819 | 1.05 | - | - | 5100 | 1635 |
| 1000 | 409 | 4.18 | - | 271 | 3284 | 1389 |
| 1500 | 273 | 9.41 | 217 | 120 | 1899 | 1062 |
| 2000 | 204 | 16.73 | 122 | 67 | 1297 | 843 |
| 2500 | 163 | 26.15 | 78 | 43 | 970 | 691 |
| 3000 | 136 | 37.65 | 54 | 30 | (761) | (578) |

Combination Channel
 DR41D
 Item No.
 4009041413 (3 meters long)
 4009041416 (6 meters long)



| Span or column unsupported Height in mm | Uniform Load at 175 N/mm ² Stress.kg | Deflection in mm at 175 N/mm ² | Uniform Load at Max. Deflec. Of 1/200th. Span. Kg | Uniform load at Max. Deflec. Of 1/360th. Span. Kg | Max. Load of column loaded @ Centroid kg | Max. Load of column loaded @ slot face kg |
|---|---|---|---|---|--|---|
| 500 | - | - | - | - | 11682 | 2864 |
| 1000 | 1253 | 2.15 | - | - | 10451 | 2783 |
| 1500 | 835 | 4.84 | - | 718 | 7790 | 2551 |
| 2000 | 626 | 8.61 | - | 404 | 5068 | 2170 |
| 2500 | 501 | 13.45 | 465 | 258 | 3410 | 1796 |
| 3000 | 417 | 19.37 | 323 | 179 | (2427) | (1480) |

Grade 304 & 316 Stainless Steel and special length available on request



Steel

| | |
|-----------------------|-------------------------------------|
| Material Standard: | BS 1449 Part2:1983 |
| Specification: | BS 6946:1988 |
| Finishing (Item No.): | hot dip galvanized to ISO 1461:1999 |

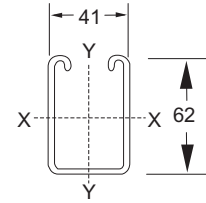
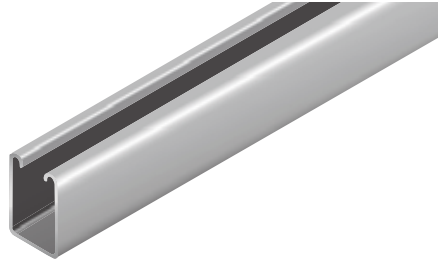
Plain Channel

DR62

Item No.

4007041623 (3 meters long)

4007041626 (6 meters long)



| Span or column unsupported Height in mm | Uniform Load at 175 N/mm ² Stress.kg | Deflection in mm at 175 N/mm ² | Uniform Load at Max. Deflec. Of 1/200th. Span. Kg | Uniform load at Max. Deflec. Of 1/360th. Span. Kg | Max. Load of column loaded @ Centroid kg | Max. Load of column loaded @ slot face kg |
|--|--|--|--|--|---|--|
| 500 | - | - | - | - | 7050 | 2095 |
| 1000 | 816 | 2.49 | - | - | 3063 | 1511 |
| 1500 | 544 | 5.60 | - | - | 1570 | 1028 |
| 2000 | 408 | 9.97 | - | 227 | 1017 | 758 |
| 2500 | 326 | 15.58 | 261 | 145 | 743 | 595 |
| 3000 | 272 | 22.43 | 181 | 101 | 581 | 486 |

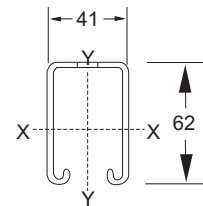
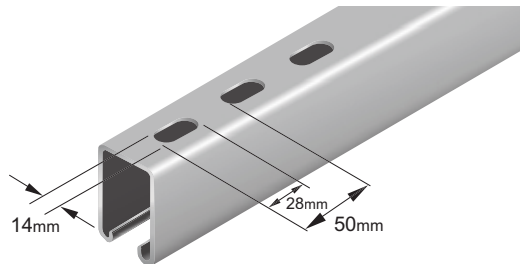
Slotted Channel

DR62S

Item No.

4006041623 (3 meters long)

4006041626 (6 meters long)



| Span or column unsupported Height in mm | Uniform Load at 175 N/mm ² Stress.kg | Deflection in mm at 175 N/mm ² | Uniform Load at Max. Deflec. Of 1/200th. Span. Kg | Uniform load at Max. Deflec. Of 1/360th. Span. Kg | Max. Load of column loaded @ Centroid kg | Max. Load of column loaded @ slot face kg |
|--|--|--|--|--|---|--|
| 500 | - | - | - | - | 6564 | 2047 |
| 1000 | 759 | 2.67 | - | - | 3256 | 1554 |
| 1500 | 506 | 6.02 | - | 350 | 1674 | 1071 |
| 2000 | 379 | 10.70 | 354 | 196 | 1083 | 794 |
| 2500 | 303 | 16.73 | 226 | 126 | 792 | 626 |
| 3000 | 253 | 24.09 | 157 | 87 | 621 | 514 |

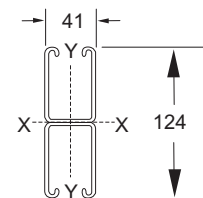
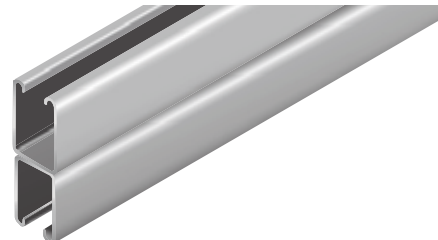
Combination Channel

DR62D

Item No.

4001041623 (3 meters long)

4001041626 (6 meters long)



| Span or column unsupported Height in mm | Uniform Load at 175 N/mm ² Stress.kg | Deflection in mm at 175 N/mm ² | Uniform Load at Max. Deflec. Of 1/200th. Span. Kg | Uniform load at Max. Deflec. Of 1/360th. Span. Kg | Max. Load of column loaded @ Centroid kg | Max. Load of column loaded @ slot face kg |
|--|--|--|--|--|---|--|
| 500 | - | - | - | - | 14440 | 3604 |
| 1000 | - | - | - | - | 13103 | 3515 |
| 1500 | 1605 | 3.07 | - | - | 10318 | 3277 |
| 2000 | 1204 | 5.47 | - | - | 6991 | 2847 |
| 2500 | 963 | 8.54 | - | 782 | 4766 | 2392 |
| 3000 | 802 | 12.30 | - | 543 | 3411 | 1994 |

Grade 304 & 316 Stainless Steel and special length available on request



Steel

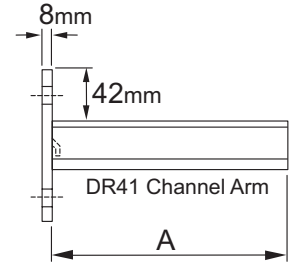
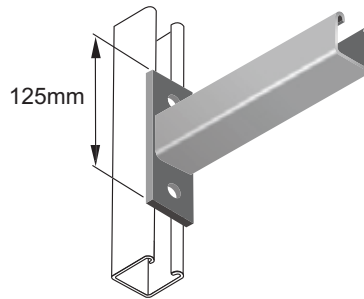
| | |
|-----------------------|-------------------------------------|
| Material Standard: | BS 1449 Part2:1983 |
| Specification: | BS 6946:1988 |
| Finishing (Item No.): | hot dip galvanized to ISO 1461:1999 |

CA01

Item No.

4001100000

| No. | A mm | Recommended UDL Kgf for vertical channel DR41 | Wt. each kg |
|----------|------|---|-------------|
| CA01/150 | 160 | 680 | 0.80 |
| CA01/300 | 310 | 356 | 1.17 |
| CA01/450 | 460 | 240 | 1.59 |
| CA01/600 | 610 | 181 | 2.03 |
| CA01/750 | 760 | 143 | 2.53 |



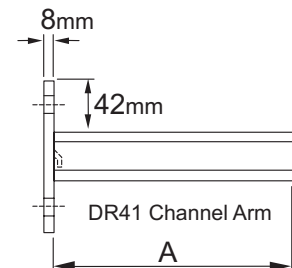
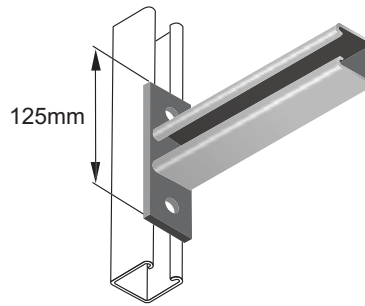
Available in slotware type

CA02

Item No.

4001200000

| No. | A mm | Recommended UDL Kgf for vertical channel DR41 | Wt. each kg |
|----------|------|---|-------------|
| CA02/150 | 160 | 680 | 0.80 |
| CA02/300 | 310 | 356 | 1.17 |
| CA02/450 | 460 | 240 | 1.59 |
| CA02/600 | 610 | 181 | 2.03 |
| CA02/750 | 760 | 143 | 2.53 |



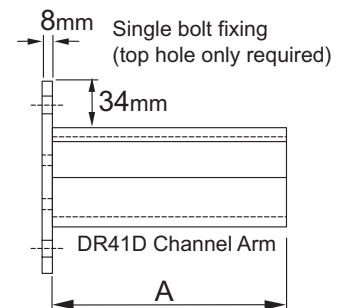
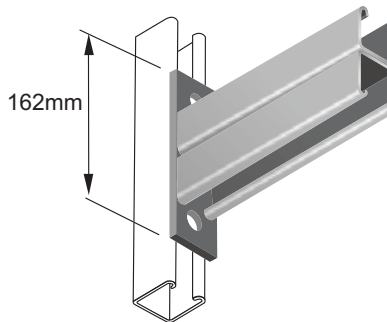
Available in slotware type

CA03

Item No.

4001300000

| No. | A mm | Recommended UDL Kgf for vertical channel DR41D | Wt. each kg |
|----------|------|--|-------------|
| CA03/300 | 310 | 609 | 2.13 |
| CA03/450 | 460 | 410 | 3.01 |
| CA03/600 | 610 | 309 | 3.72 |
| CA03/750 | 760 | 248 | 4.66 |

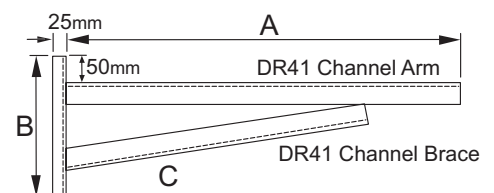
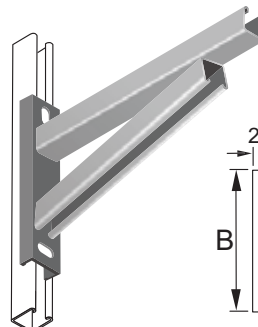


CA04

Item No.

4001400000

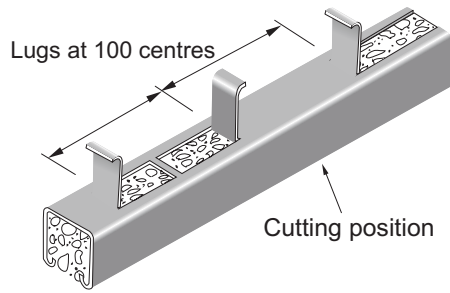
| No. | A mm | B mm | C mm | Recommended UDL Kgf for vertical channel DR41 | Wt. each kg |
|-----------|------|------|------|---|-------------|
| CA04/750 | 760 | 270 | 608 | 460 | 4.63 |
| CA04/900 | 910 | 330 | 728 | 460 | 4.78 |
| CA04/1050 | 1060 | 380 | 848 | 460 | 5.67 |



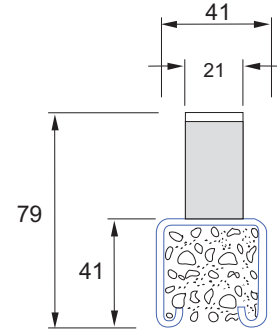
Grade 304 & 316 Stainless Steel and special length available on request

| | |
|-------------------------|---|
| Concrete Inserts | Steel |
| | Material Standard: BS 1449 Part2:1983 |
| | Finishing (Item No.): hot dip galvanized to ISO 1461:1999 |

DR41C1
Item No.
4001500000

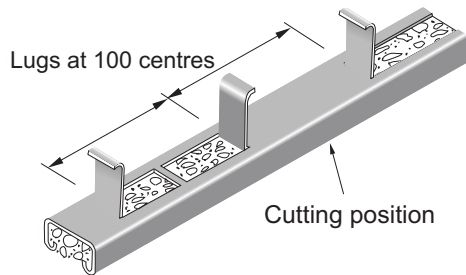


Inserts 300mm and over 900 kgf pull out per 300mm

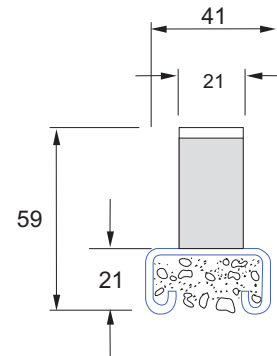


DR21C1
Item No.
4001600000

(Manufactured to order)



Inserts 300mm and over 680 kgf pull out per 300mm

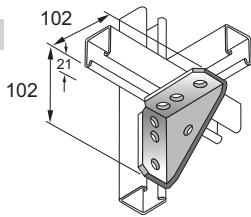


Grade 304 & 316 stainless steel and special length available on request

| | |
|---|---------------------------------------|
| Channel Bracket | Steel |
| | Material Standard: BS 1449 Part2:1983 |
| | Specification: BS 6946:1988 |
| Finishing (Item No.): hot dip galvanized to ISO 1461:1999 | |

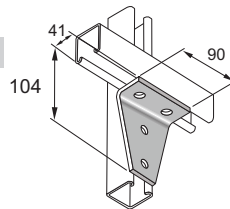
Angle Bracket with Plate

Item No.
4054510014



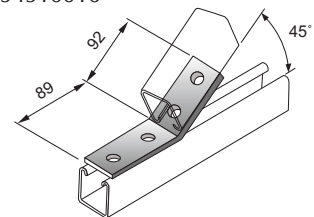
Wide Tee Angle Bracket

Item No.
4054510015



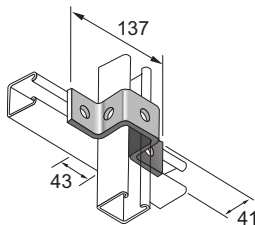
45 degree Angle Bracket

Item No.
4054510016



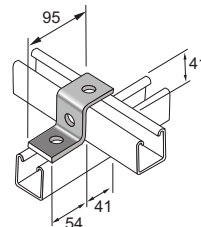
Off Set Tee Bracket

Item No.
4054510017



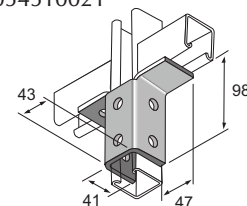
Single Cross Over Bracket

Item No.
4054510018



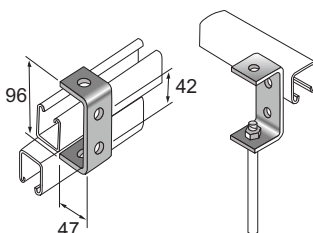
Transverse Support Bracket

Item No.
4054510021



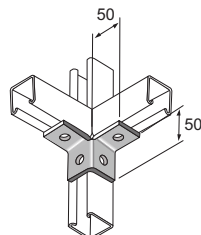
C Bracket

Item No.
4054510019

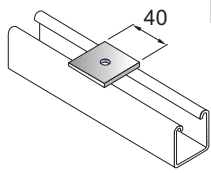


Transverse Corner Bracket

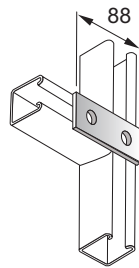
Item No.
4054510020



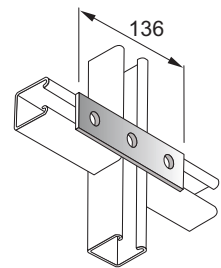
Square Washer
Item No. 4054510000



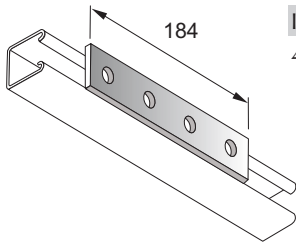
Rectangular Plate (2 holes)
Item No. 4054510001



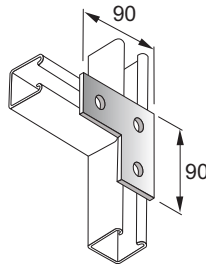
Rectangular Plate (3 holes)
Item No. 4054510002



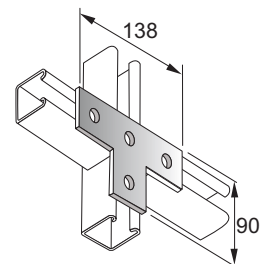
Rectangular Plate (4 holes)
Item No. 4054510003



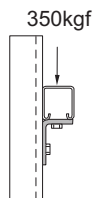
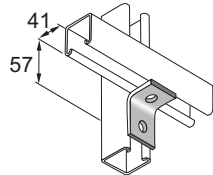
Flat Angle Bracket
Item No. 4054510004



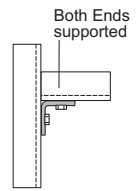
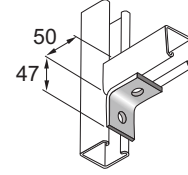
Tee Bracket
Item No. 4054510015



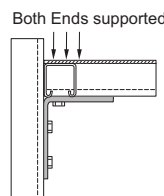
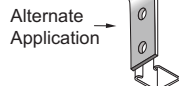
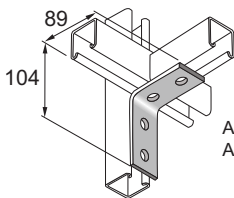
Angle Bracket (41x57 / 2 holes)
Item No. 4054510006



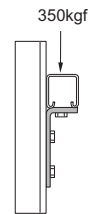
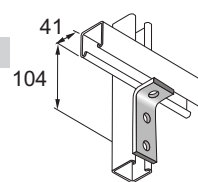
Angle Bracket (50x47 / 2 holes)
Item No. 4054510007



Angle Bracket (4 holes)
Item No. 4054510009

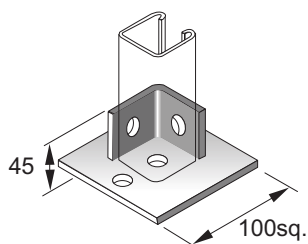


Angle Bracket (3 holes)
Item No. 4054510008

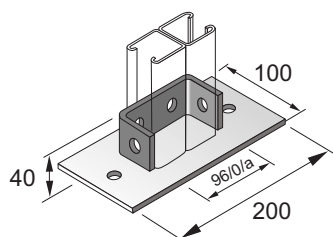


| | |
|----------------------|---|
| Floor Bracket | Steel |
| | Material Standard: BS 1449 Part2:1983 |
| | Specification: BS 6946:1988 |
| | Finishing (Item No.): hot dip galvanized to ISO 1461:1999 |

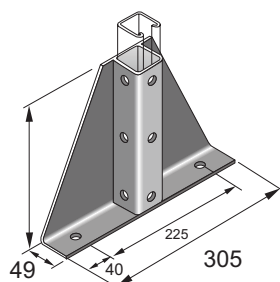
41x41 Single Base Plate (Light Duty)
Item No. 4054510010



41x41 Double Base Plate (Light Duty)
Item No. 4054510011



41x41 Single Base Plate (Heavy Duty)
Item No. 4054510012



41x41 Double Base Plate (Heavy Duty)
Item No. 4054510013

